

Pacific Grove Museum of Natural
History Director's Report March 2022

Guests & Event Attendance	March 2022		
Museum Visitation	General Attendance	1,319	
	Science Saturday	175	In County 506
	Museum Events*	176	Out of County 515
	Group Visits	27	
	Free First Friday Preschool CC*	36 41	
			TOTAL: 1,536

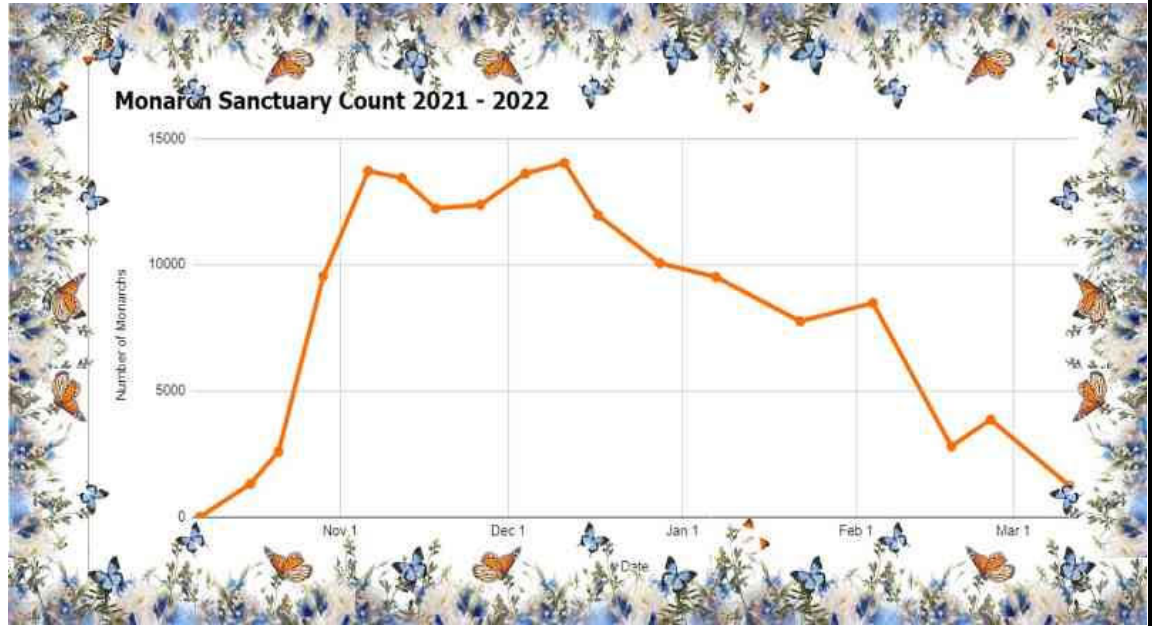
March 2022			
Permanent Exhibitions	Nature Exchange exhibit open and work continues on Wonder exhibit opening summer 2022 and Native Plant Garden and Children's Garden Spring 2022. Contract to complete Changes dioramas in place.		
Special Exhibitions	Transporting 1882 exhibit (4/15-5/5, 2022) w Chinese Hist. Society loan, and design and installation for Illustrating Nature underway w UCMB for May/June		
Education	March 2022		
Field Trips (included in Gen Attendance)	Groups: 11	Virtual: 1	Onsite: 10
	Students: 265		2 groups in Sanctuary
Other Group Visits & PreK Curiosity Club*	Groups: 6	Attendees	
	1 Scouts	27	
	5 PCC	Total: 68	*41 not in GA
Science Saturday	175		
Event Tabling	Event:	Participants:	
		NR	
Climate Stewards		19	
Group Outreach Programs/Kits	# of Schools	Students	# Program/Kit
	3	93	3
Museum Events/ Facility Rentals/ Private Events Guests*	Lectures* 0		
	HNH* 29		
	Business Member Meetings* 81	* 176 not in GA	
	Private Events & Receptions* 66		
Jr Naturalists	21		
LIMPETS	# of Schools	Grade Level	# of Students
	12	7-14	701
	Adult workshop		0
Watershed Guardian Program	# of Schools	Grade Level	# of Students
	2	7	642**
	**data thru 3/24		
Marketing & Promotions	March 2022		
Web, Media Social Media	Website Visits: 8K visits,19 K page views (drop due to Monarch season end) Honored to be voted by <i>Carmel Pinecone</i> and the <i>Monterey Herald</i> as Best Museum	Instagram- 2,867 Facebook-9,408 Twitter-1,995	Tumblr: 1,164 LinkedIn: 158

Organizational Updates

March 2022

Monarch Sanctuary Count as of 3/31: 1,243

Open positions as of 3/31/22 :0

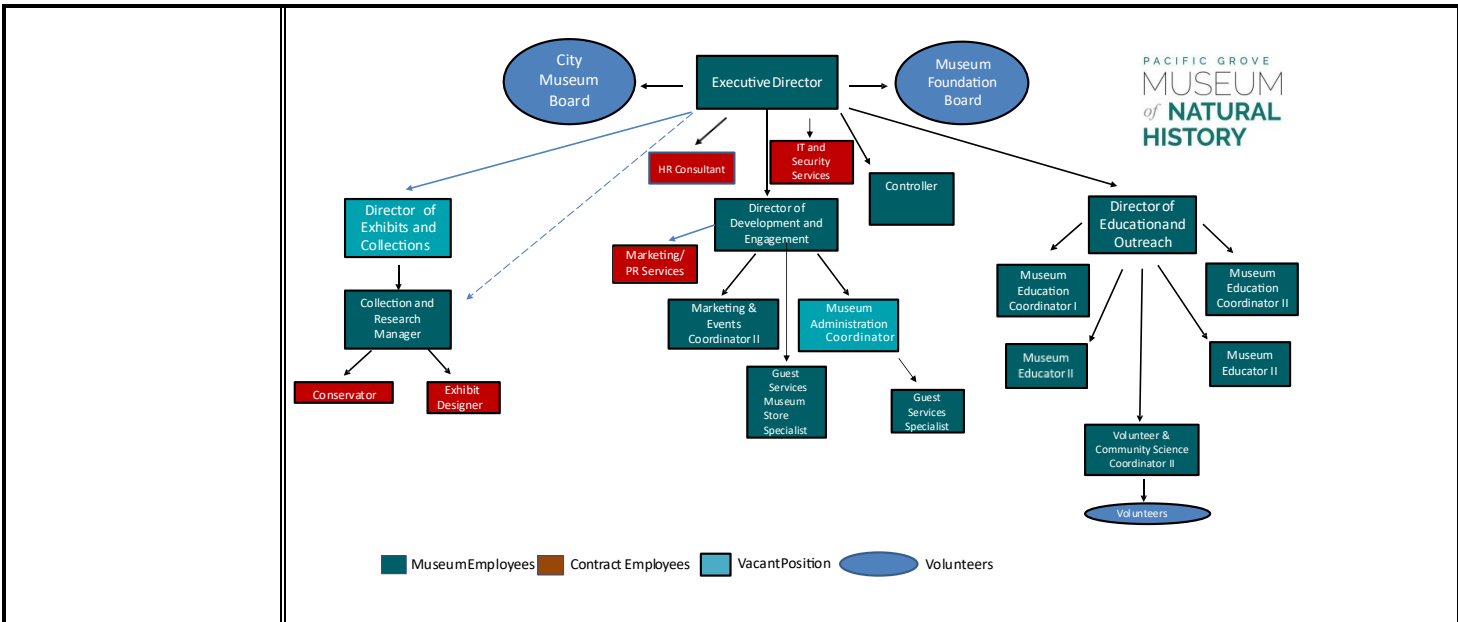


The Museum is thrilled to be hosting in person events again, and enjoyed a reception for the newly opened Nature Exchange exhibit, and a member event, as well as hosting our colleagues for a week of natural history learning from Science North, Sudbury OT Canada

The Museum is officially under a long term IT project and contract with Rayne Technology, our new IT provider.

We also launched our very successful pilot program for a new series, Preschool Curiosity Club and began the spring session of our Climate Stewards course with 19 students.

Summer Camp 2022 registration is now open.



Current Org Chart for PG Museum March 2022

Volunteers	March 2022		
Volunteers	Active Volunteers: 46 Monarch Docents: 8 BLOY: 9	Combined Vol Hours 300.85 Monarch docents) 23.25	<i>The Monarch 2022 count has officially ended. New Watershed Guardian, Plankton monitoring and BLOY are included in March's count of volunteers. We thanked our Monarch volunteers with a special breakfast!</i>
Volunteer Trainings	122.5 hours accrued by 32 volunteers		

Collections	March 2022
Management	Continued rotating inventory: a. 147 items assessed, photographed and inventoried. b. 13 items added to catalog Rehoused items in appropriate archival conditions where necessary.
Conservation	Maya Sosa completed work on collection and exhibit file reorganization and began working on library reorganization and cataloging project. Request for genetic sampling of Orca skull and teeth

Membership	March 2022
Active Memberships	643
Business Members	4